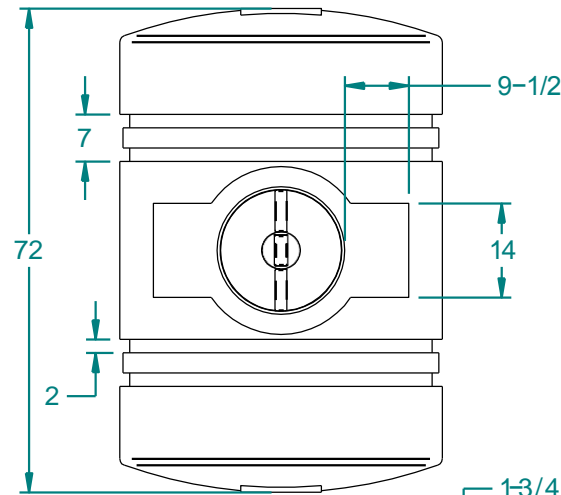
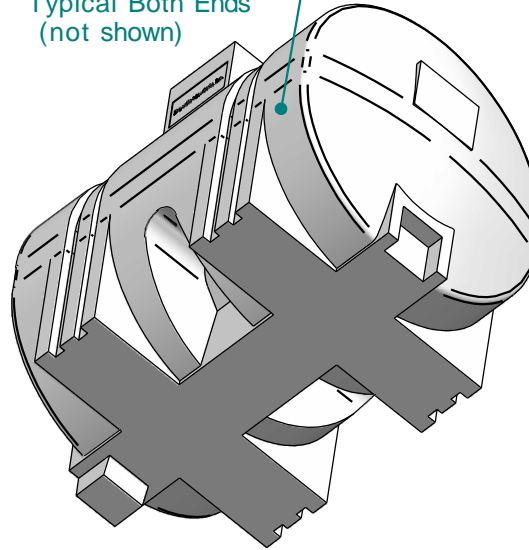


REVISION HISTORY

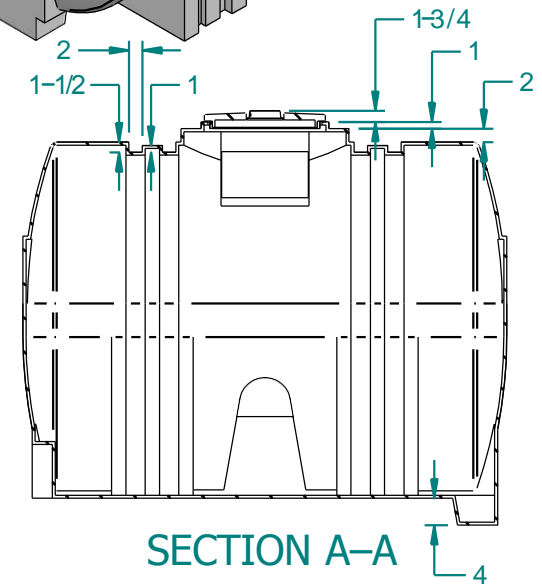
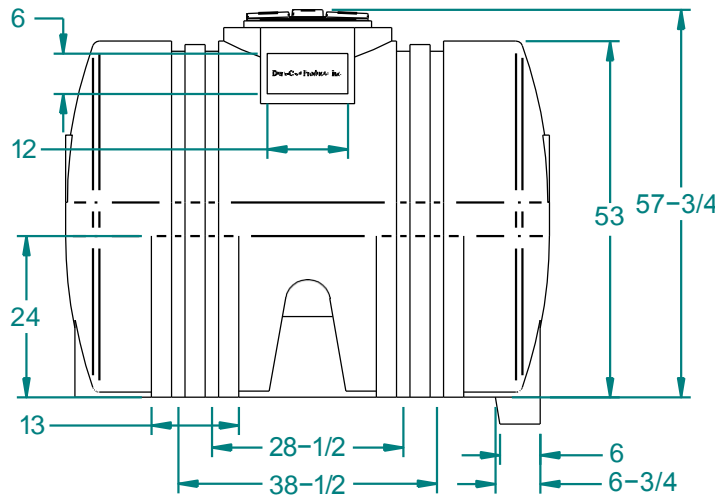
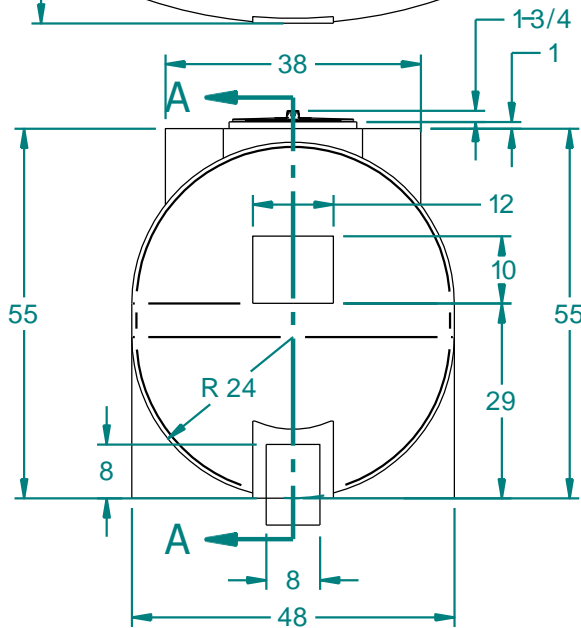
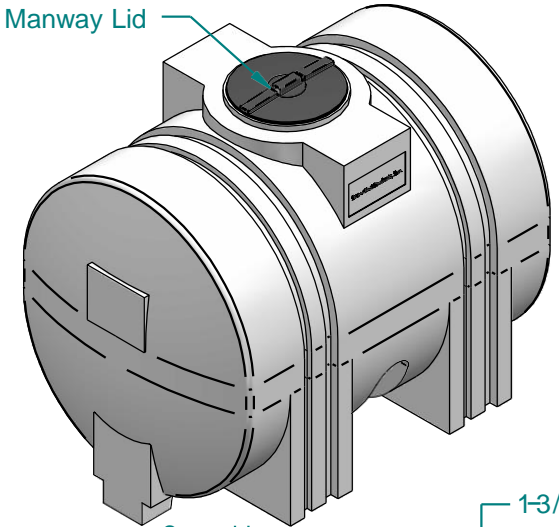
REV	DESCRIPTION	DATE	APPROVED	Revised By
10	PRODUCT RELEASE	12/17/13		




Gallons Calibration  
25 Gal Intervals  
Typical Both Ends  
(not shown)



16" Manway Lid

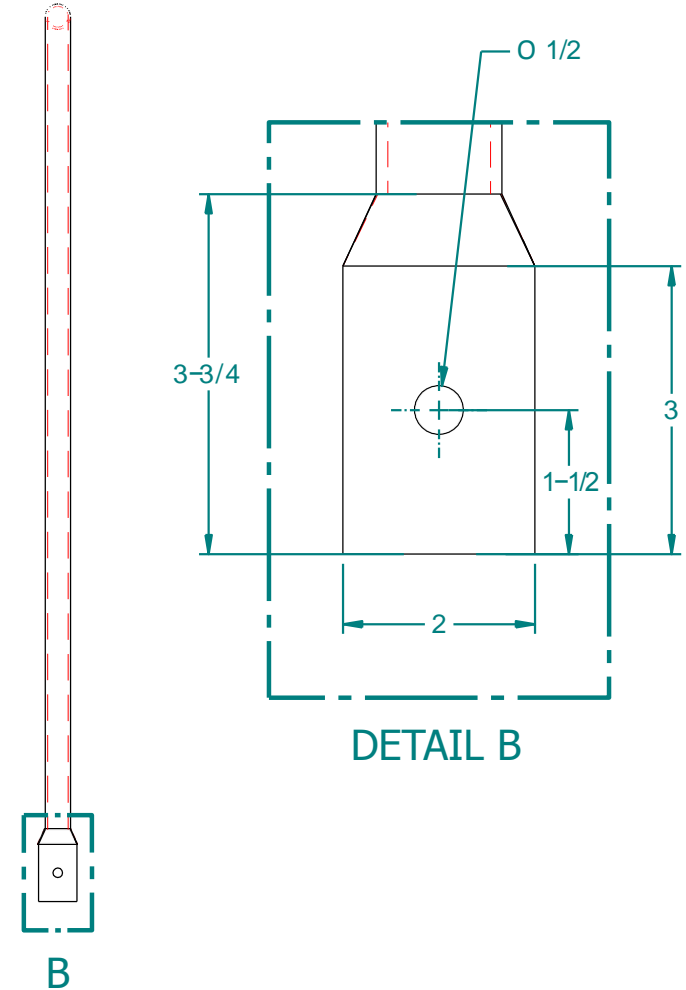
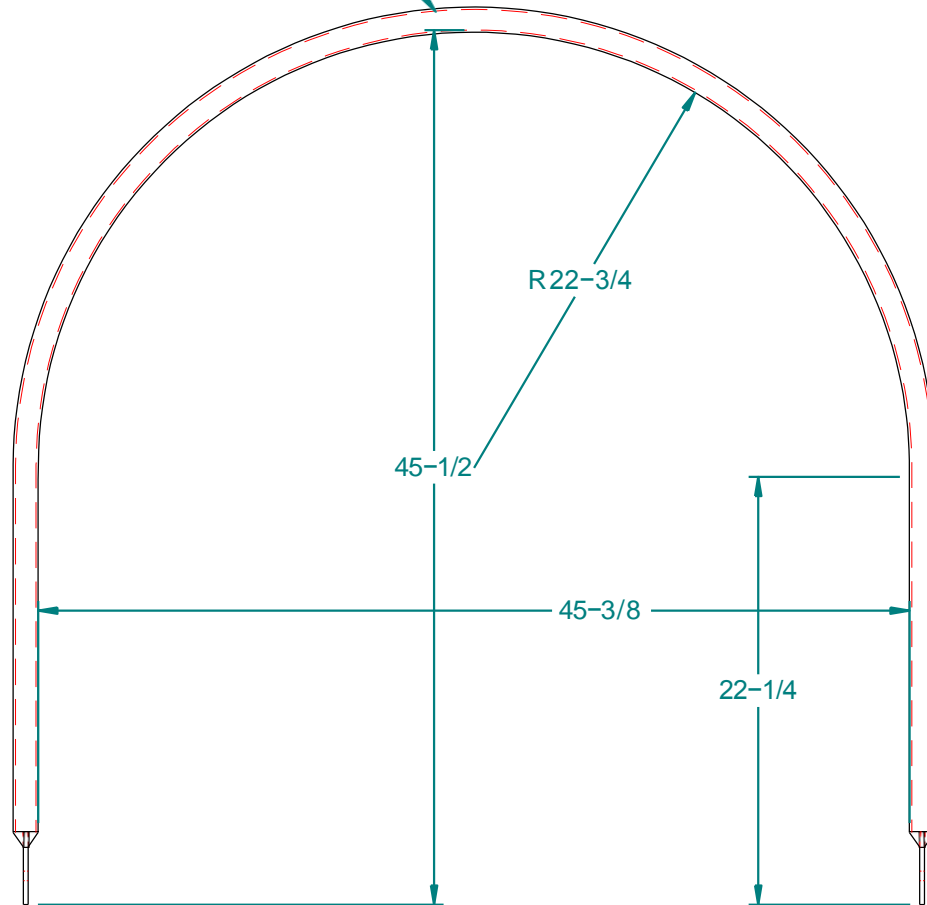


Weight: 279 lbm	NAME	DATE	 <p>16160 Hwy 27 Lake Wales, FL 33859</p>
Minimum Wall Thickness: 0.375 in	DRAWN By: mnegron	4/14/2014	
Customer Part No: NA	Customer: Dura-Cast Products, Inc.	Part Title: 550 Gal Leg Tank	File Name: 550 Gal Leg Tank03.dft
Print Date: 4/14/2014	MFG APPR	Material: HDPE 942	Rev: 10
Comments:	Tolerance: UNLESS OTHERWISE SPECIFIED DIMENSIONS ARE IN INCHES ±1% Std Radii 3/16"	Part No: 920550-A1200XX1	Do Not Scale Sheet: 1 OF 2


### REVISION HISTORY

REV	DESCRIPTION	DATE	APPROVED	Revised By
10	PRODUCT RELEASE	12/17/13		

1" RIGID GALVANIZED PIPE  
1.31" O.D. W/ 0.120" WALL



REQUIRES: -(2ea) 3/8-16 x 10" "J" HOOKS.S.  
 - (2ea) 3/8-16 THREADED NUT S.S.  
 - (2EA) 3/8 x 1-1/2" FENDER WASHER S.S.

Weight: 279 lbm	NAME	DATE	 16160 Hwy 27 Lake Wales, FL 33859	
Minimum Wall Thickness: 0.375 in	DRAWN By: mnegron	4/14/2014		
Customer Part No: NA	Customer APPR		Customer: U.S. Jetting	
Print Date: 4/14/2014	MFG APPR		Part Title: 550 Gal Leg Tank	
Comments:	Tolerance: UNLESS OTHERWISE SPECIFIED DIMENSIONS ARE IN INCHES ±1% Std Radii 3/16"	File Name: 550 Gal Leg Tank03.dft		
		Size A	Material: HDPE 942	Rev: 10
		Part No: 920550-A1200XX1	Do Not Scale	Sheet: 2 OF 2